

# Jay Bhagwati

All Type Of Solar Parts

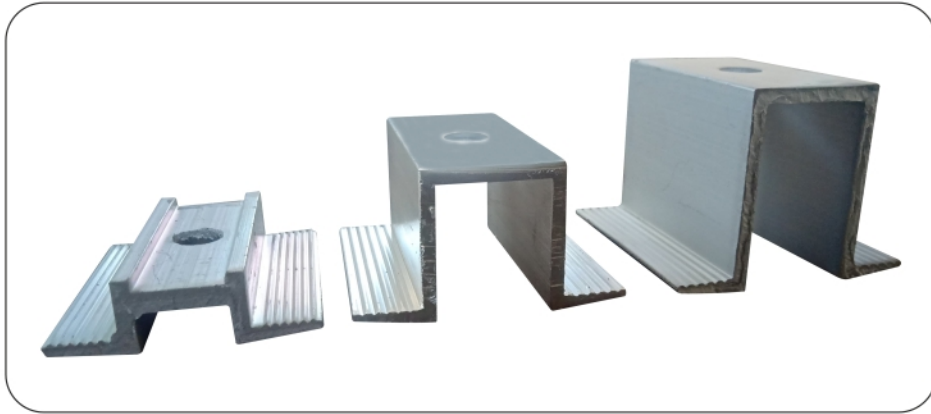


[www.jaybhagwati.in](http://www.jaybhagwati.in)





## Aluminium HE9 6063



**Mid Clamp**

Size : 10mm, 25mm, 35mm



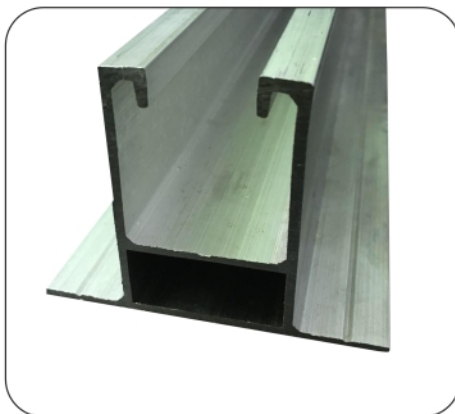
**End Clamp**

Size : 30mm, 35mm,  
40mm, 45mm



**Strut Profile**

Size : 41 x 41 x 2.5 mm



**Mono Rail Profile**

Size : 80 x 61 x 41 x 2.5 mm



**Micro Rail Profile**

Size : 68 x 31 x 41 x 2.5 mm



**C Channel Profile**

Size : 65 x 30 x 2.2 mm  
59 x 25 x 2.2 mm



**Plain Strut Channel**

Material : G.I., M.S. &  
Hot Dip Galvanize  
Thickness : 1.5 to 2.5 mm



**L Angle Profile**

Size : 38 x 38 x 4mm



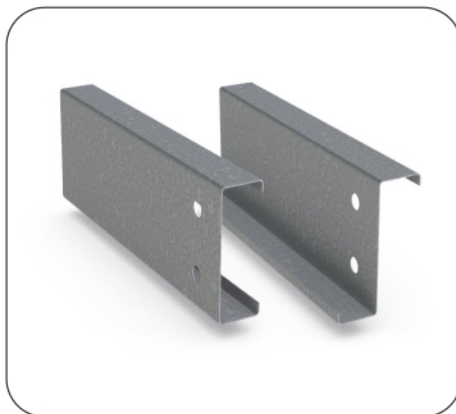


### GI. MS. & Hot Dip Galvanize



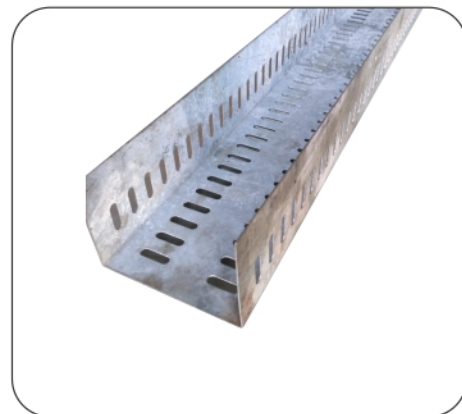
**Slotted Strut Channel**

Material : G.I., M.S. & Hot Dip Galvanize  
Thickness : 1.5 to 2.5 mm



**Lip & Z Channel**

Material : G.I., M.S. & Hot Dip Galvanize  
Thickness : 1.5 to 2.5 mm



**Cable Tray**

Material : G.I., M.S. & Hot Dip Galvanize  
Thickness : 1mm to 2.5 mm



**Base Plate**

Material : G.I., M.S. & Hot Dip Galvanize  
Thickness : 2mm to 6mm



**Degree Clamp (L Bracket)**

Material : G.I., M.S. & Hot Dip Galvanize  
Thickness : 2mm to 3mm



**Jointer**

Material : G.I., M.S. & Hot Dip Galvanize  
Thickness : 2mm to 2.5 mm



**J Bolt, U Bolt & LN Cap Bolt**

Material : G.I., S.S.



**Spring Nut, SDS & Washer Nut**

Material : G.I., S.S.



**Hex Bolt All Size**

Material : G.I., S.S.





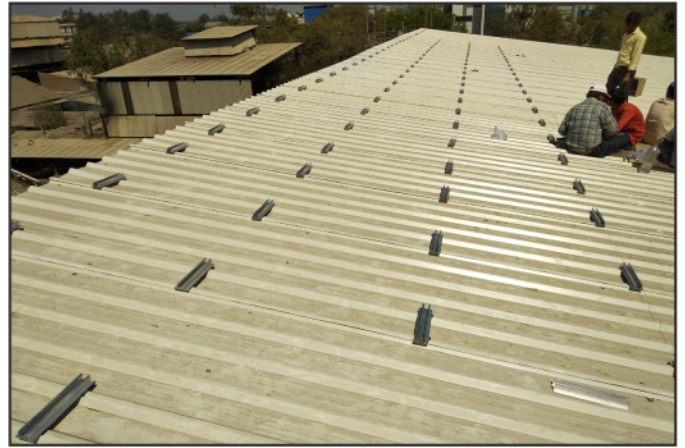
Ground Mounting Structure



Mounting Structure



Tin Shed Aluminum Structure



Aluminum Block Structure



Roof Strut Structure



Ballast Structure



## J.B. ENGINEERS

**MFG. OF : ALL TYPE OF SOLAR PANEL STRUCTURE PARTS**

Plot No. 1093/G, G Road 1-C, Kishan Gate, GIDC Metoda - 360 021.

Dist. Rajkot. Cell : 95744 09230, 98795 98255

Email : [info@jaybhagwati.in](mailto:info@jaybhagwati.in), [jaybhagwatiengineers@gmail.com](mailto:jaybhagwatiengineers@gmail.com)

Website : [www.jaybhagwati.in](http://www.jaybhagwati.in)

